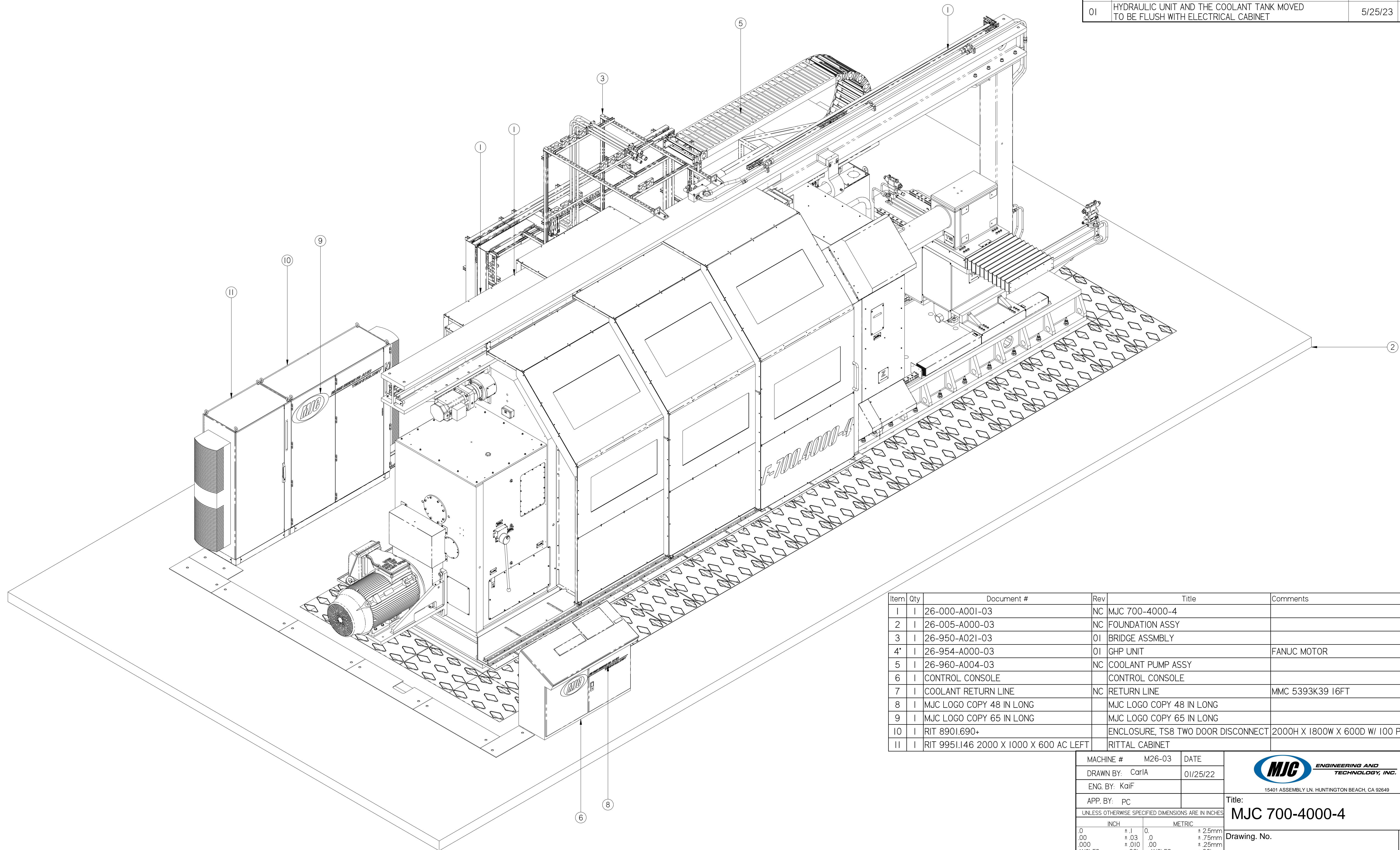


REV	DESCRIPTION	DATE	APP
01	HYDRAULIC UNIT AND THE COOLANT TANK MOVED TO BE FLUSH WITH ELECTRICAL CABINET	5/25/23	PC



Item	Qty	Document #	Rev	Title	Comments
1	1	26-000-A001-03	NC	MJC 700-4000-4	
2	1	26-005-A000-03	NC	FOUNDATION ASSY	
3	1	26-950-A021-03	01	BRIDGE ASSMBLY	
4*	1	26-954-A000-03	01	GHP UNIT	FANUC MOTOR
5	1	26-960-A004-03	NC	COOLANT PUMP ASSY	
6	1			CONTROL CONSOLE	
7	1		NC	RETURN LINE	MMC 5393K39 16FT
8	1			MJC LOGO COPY 48 IN LONG	
9	1			MJC LOGO COPY 65 IN LONG	
10	1			ENCLOSURE, TS8 TWO DOOR DISCONNECT	2000H X 1800W X 600D W/ 100 PLINTH
11	1			RITTAL CABINET	

MACHINE # M26-03 DATE  
 DRAWN BY: CarlA 01/25/22  
 ENG. BY: KaiF  
 APP. BY: PC



Title:  
MJC 700-4000-4

UNLESS OTHERWISE SPECIFIED DIMENSIONS ARE IN INCHES

INCH		METRIC	
0	± .1	0	± 2.5mm
.00	± .03	.0	± .75mm
.000	± .010	.00	± .25mm
ANGLES	± 30'	ANGLES	± 30'
FRACTIONS	± 1/16	FRACTIONS	NA
FLAME CUT	± 1/8	FLAME CUT	± 3mm
WELDMENTS	± 1/8	WELDMENTS	± 3mm

Drawing. No.  
26-000-A000-03

REV.  
01

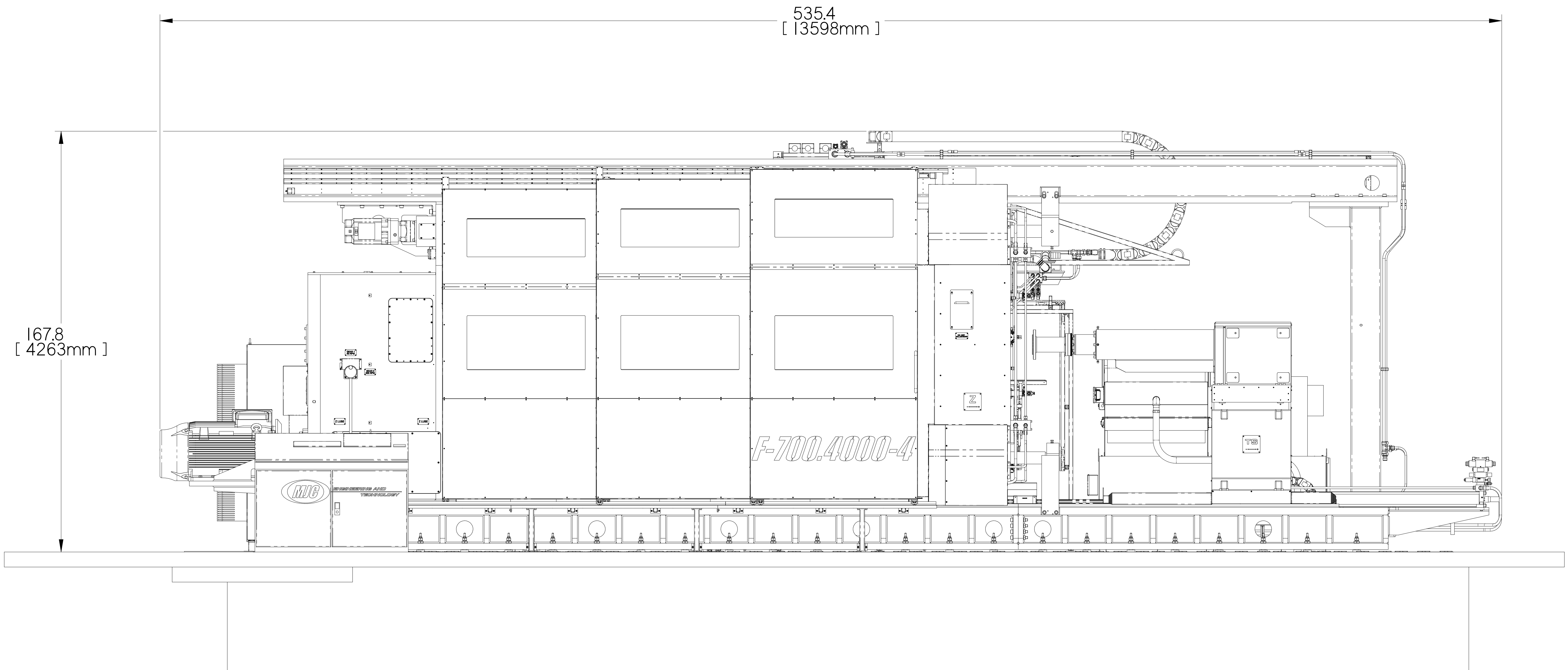
COUNTERSINK BOTTOM OF COUNTERBORE  
 BREAK ALL SHARP EDGES, NO BURRS ALLOWED  
 ALL DATUMS TO BE  $\angle$ ,  $\perp$ ,  $\parallel$

SIZE D DO NOT SCALE SHEET SHEET 1 OF 4

LAST UPDATED 5/25/2023  
 TOTAL WEIGHT = 97709.4 kg

**PRODUCTION COPY**

M26-03 1  
 BELONGS TO EACH MACHINE




167.8  
[ 4263mm ]

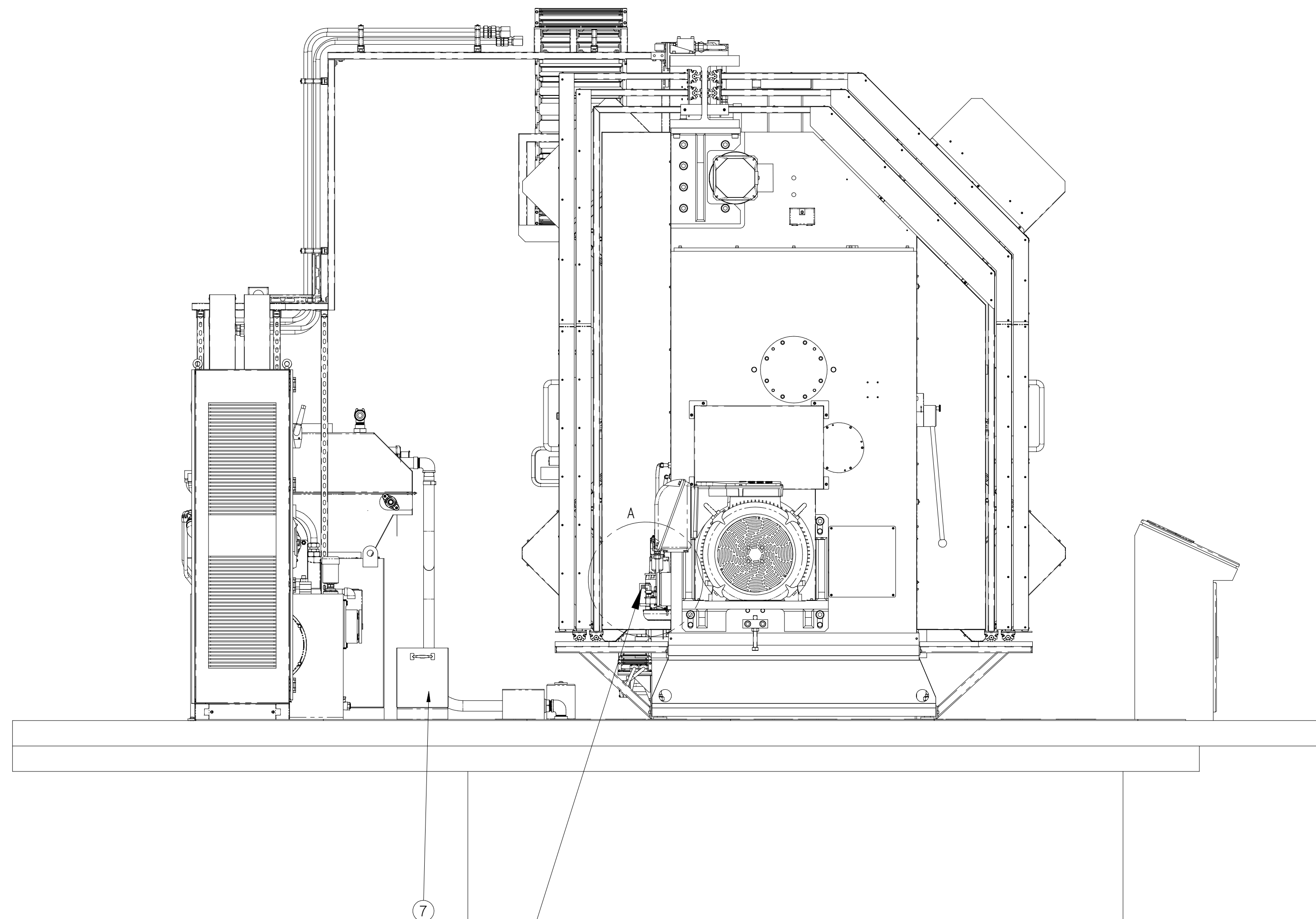
535.4  
[ 13598mm ]

F-700.4000-4

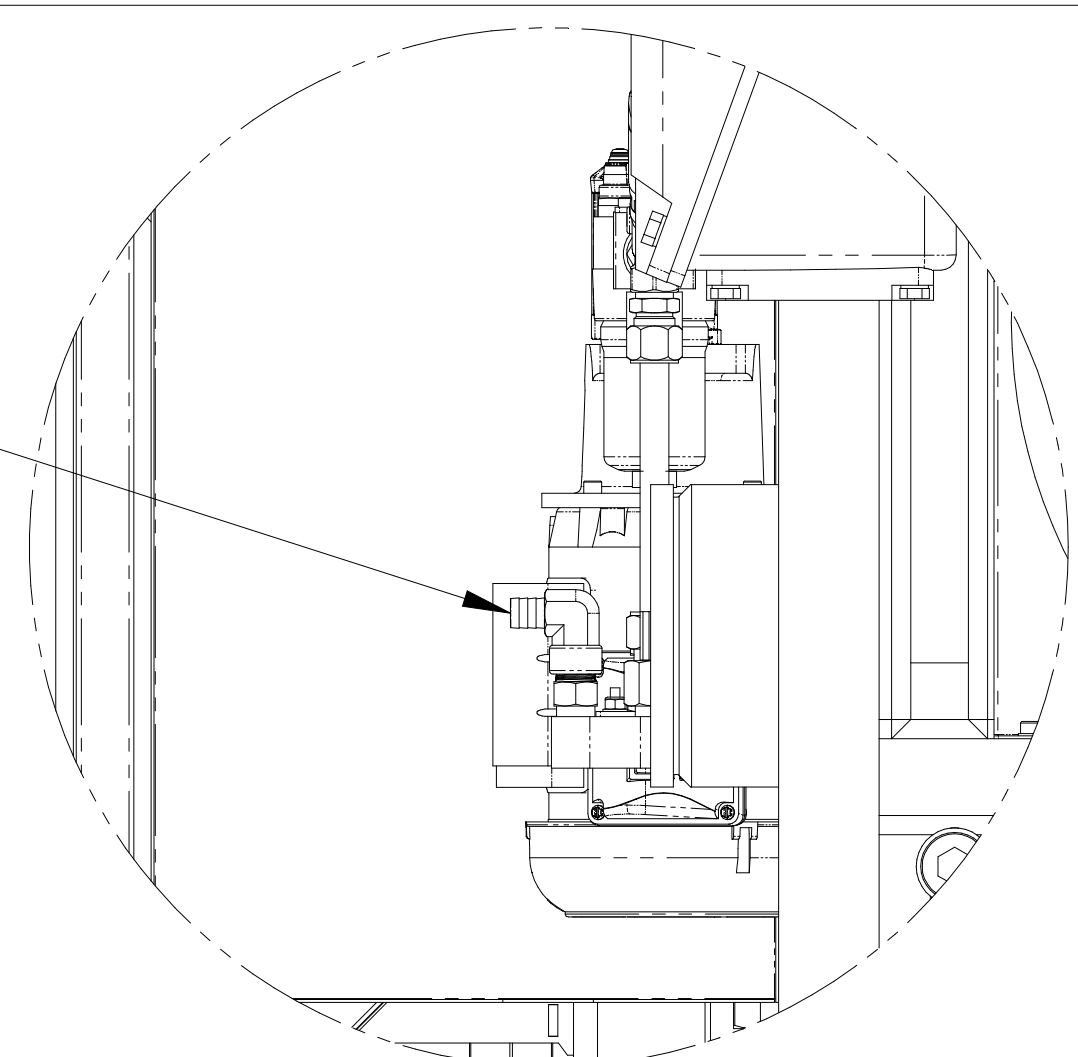


MACHINE #	M26-03	DATE	 15401 ASSEMBLY LN. HUNTINGTON BEACH, CA 92649	
DRAWN BY:	CarlA	01/25/22		
ENG. BY:	Kaif			
APP. BY:	PC		Title:	
UNLESS OTHERWISE SPECIFIED DIMENSIONS ARE IN INCHES			MJC 700-4000-4	
INCH		METRIC		Drawing No.
0	± .1	0	± 2.5mm	
.00	± .03	.0	± .75mm	26-000-A000-03
.000	± .010	.00	± .25mm	
ANGLES	± 30°	ANGLES	± 30°	REV. 01
FRACTIONS	± 1/16	FRACTIONS	NA	
FLAME CUT	± 1/8	FLAME CUT	± 3mm	SIZE D
WELDMENTS	± 1/8	WELDMENTS	± 3mm	
COUNTERSINK BOTTOM OF COUNTERBORE BREAK ALL SHARP EDGES, NO BURRS ALLOWED ALL DATUMS TO BE $\angle$ , $\perp$ , $\parallel$			DO NOT SCALE	SHEET SHEET 2 OF 4

**PRODUCTION COPY**




COOLING WATER CONNECTION



DETAIL A

**PRODUCTION COPY**

MACHINE #	M26-03	DATE	 15401 ASSEMBLY LN. HUNTINGTON BEACH, CA 92649																																
DRAWN BY:	CarlA	01/25/22																																	
ENG. BY:	KaIF																																		
APP. BY:	PC		Title: MJC 700-4000-4																																
UNLESS OTHERWISE SPECIFIED DIMENSIONS ARE IN INCHES			Drawing No. 26-000-A000-03																																
<table border="1"> <thead> <tr> <th colspan="2">INCH</th> <th colspan="2">METRIC</th> </tr> </thead> <tbody> <tr> <td>0</td> <td>± .1</td> <td>0</td> <td>± 2.5mm</td> </tr> <tr> <td>.00</td> <td>± .03</td> <td>.0</td> <td>± .75mm</td> </tr> <tr> <td>.000</td> <td>± .010</td> <td>.00</td> <td>± .25mm</td> </tr> <tr> <td>ANGLES</td> <td>± 30'</td> <td>ANGLES</td> <td>± 30'</td> </tr> <tr> <td>FRACTIONS</td> <td>± 1/16</td> <td>FRACTIONS</td> <td>NA</td> </tr> <tr> <td>FLAME CUT</td> <td>± 1/8</td> <td>FLAME CUT</td> <td>± 3mm</td> </tr> <tr> <td>WELDMENTS</td> <td>± 1/8</td> <td>WELDMENTS</td> <td>± 3mm</td> </tr> </tbody> </table>		INCH		METRIC		0	± .1	0	± 2.5mm	.00	± .03	.0	± .75mm	.000	± .010	.00	± .25mm	ANGLES	± 30'	ANGLES	± 30'	FRACTIONS	± 1/16	FRACTIONS	NA	FLAME CUT	± 1/8	FLAME CUT	± 3mm	WELDMENTS	± 1/8	WELDMENTS	± 3mm	REV. 01	
INCH		METRIC																																	
0	± .1	0	± 2.5mm																																
.00	± .03	.0	± .75mm																																
.000	± .010	.00	± .25mm																																
ANGLES	± 30'	ANGLES	± 30'																																
FRACTIONS	± 1/16	FRACTIONS	NA																																
FLAME CUT	± 1/8	FLAME CUT	± 3mm																																
WELDMENTS	± 1/8	WELDMENTS	± 3mm																																
COUNTERSINK BOTTOM OF COUNTERBORE BREAK ALL SHARP EDGES, NO BURRS ALLOWED ALL DATUMS TO BE $\angle$ , $\perp$ , //		SIZE D	DO NOT SCALE	SHEET SHEET 3 OF 4																															

GROUNDING ROD  
8 FT (2.4m) LONG  
5/8IN (16mm) DIAMETER  
COPPER, STAINLESS STEEL  
OR ZINC COATED STEEL ROD

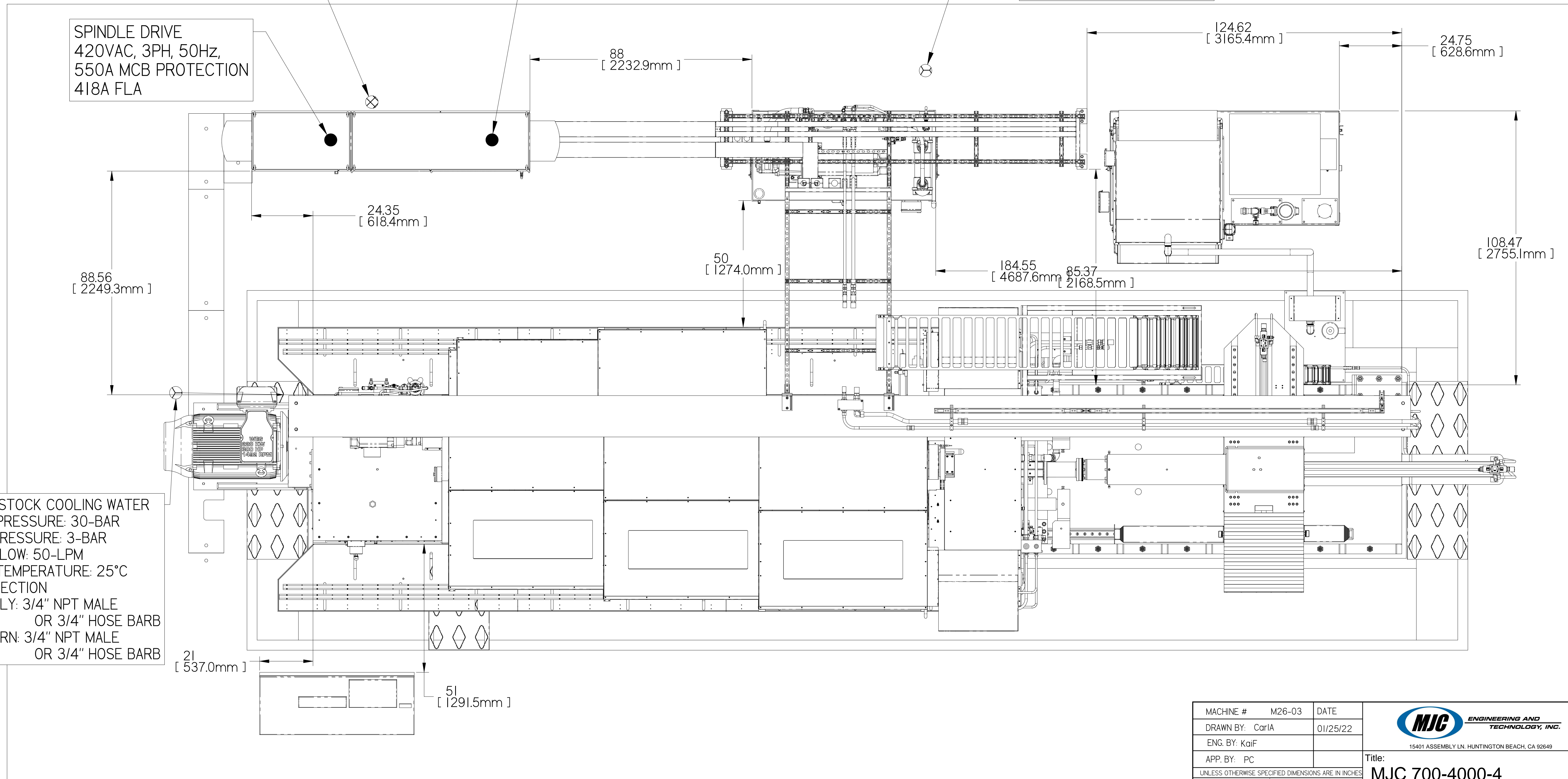
CNC DRIVE  
420VAC, 3PH, 50Hz,  
300A MCB PROTECTION  
236A FLA

OPTIONAL  
NETWORK/INTERNET CABLE  
CAT5

HPU COOLING WATER  
MAX PRESSURE: 30-BAR  
MIN PRESSURE: 3-BAR  
MIN FLOW: 50-LPM  
MAX TEMPERATURE: 25°C  
CONNECTION  
SUPPLY: 1" NPT FEMALE  
RETURN: 1" NPT FEMALE

SPINDLE DRIVE  
420VAC, 3PH, 50Hz,  
550A MCB PROTECTION  
418A FLA

HEADSTOCK COOLING WATER  
MAX PRESSURE: 30-BAR  
MIN PRESSURE: 3-BAR  
MIN FLOW: 50-LPM  
MAX TEMPERATURE: 25°C  
CONNECTION  
SUPPLY: 3/4" NPT MALE  
OR 3/4" HOSE BARB  
RETURN: 3/4" NPT MALE  
OR 3/4" HOSE BARB



MACHINE #	M26-03	DATE	
DRAWN BY:	CarlA	01/25/22	
ENG. BY:	Kaif		
APP. BY:	PC		
UNLESS OTHERWISE SPECIFIED DIMENSIONS ARE IN INCHES			
INCH		METRIC	
0	± .1	0	± 2.5mm
.00	± .03	.0	± .75mm
.000	± .010	.00	± .25mm
ANGLES	± 30'	ANGLES	± 30'
FRACTIONS	± 1/16	FRACTIONS	NA
FLAME CUT	± 1/8	FLAME CUT	± 3mm
WELDMENTS	± 1/8	WELDMENTS	± 3mm
COUNTERSINK BOTTOM OF COUNTERBORE BREAK ALL SHARP EDGES, NO BURRS ALLOWED ALL DATUMS TO BE $\angle$ , $\perp$ , $\parallel$			
Title:		MJC 700-4000-4	
Drawing. No.		26-000-A000-03	
SIZE	D	DO NOT SCALE	SHEET SHEET 4 OF 4
			REV. 01

**PRODUCTION COPY**