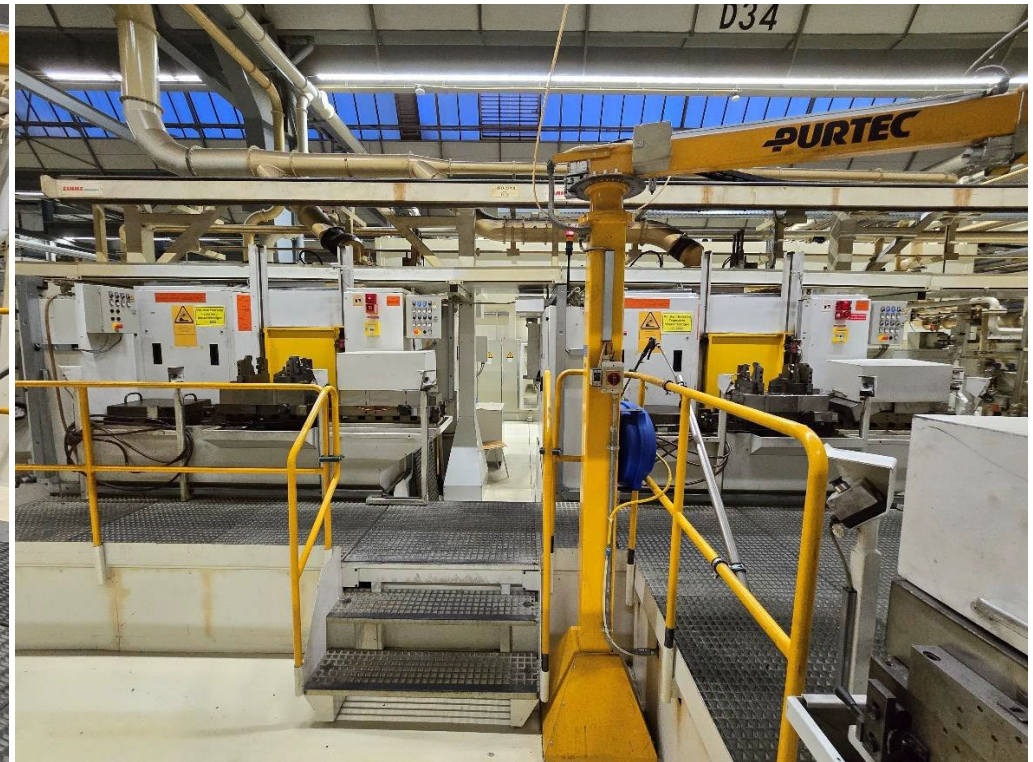
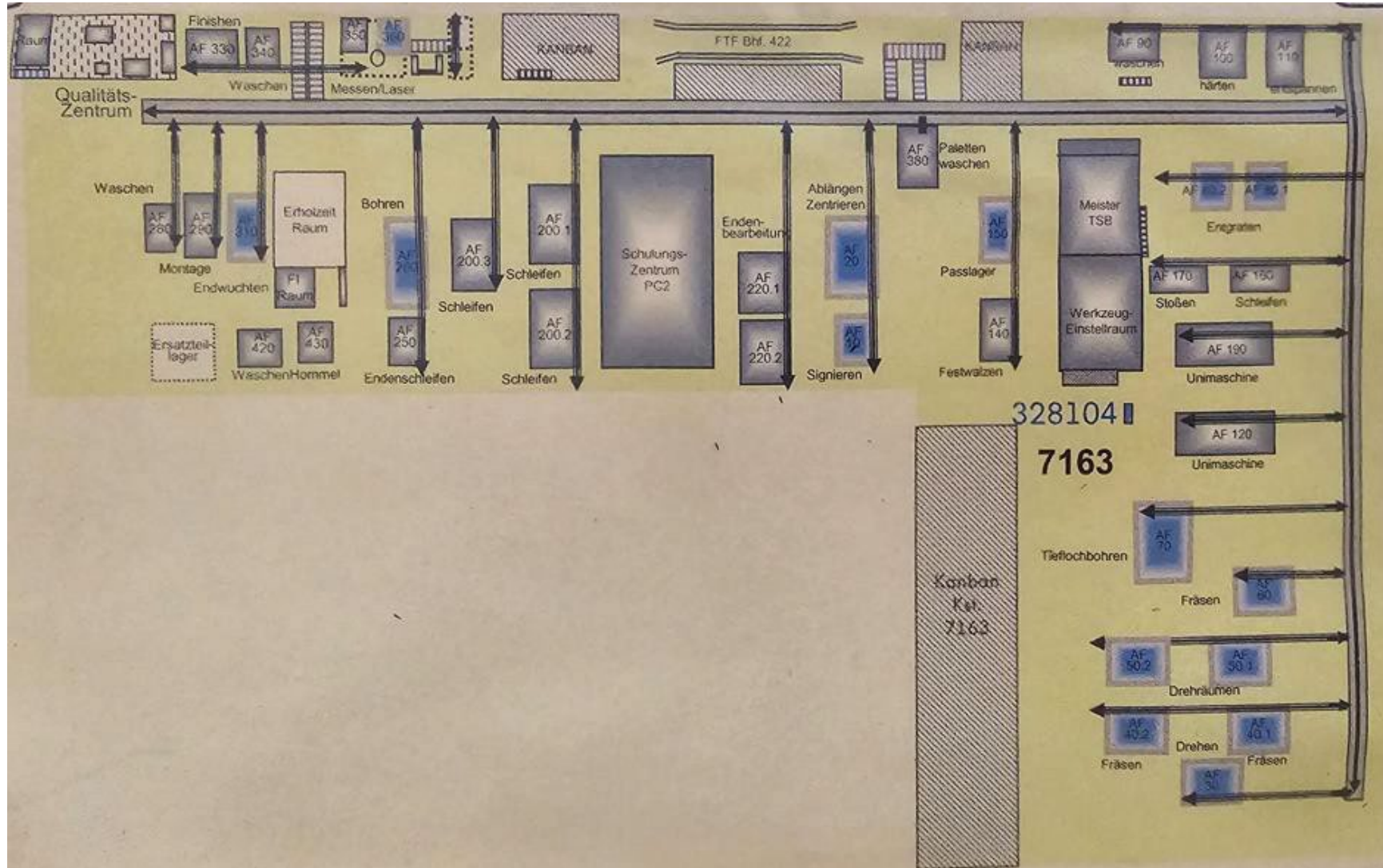


**Used Line for the Machining of Crankshafts up to 800mm,
including two Machines for Milling and Drilling of Crankshafts up to 2.500mm Length
all Machines are from Year 2005 – 2015, some retrofitted 2019, CNC SIEMENS SINUMERIK 840 D**

LICON LIFLEX facing + centering



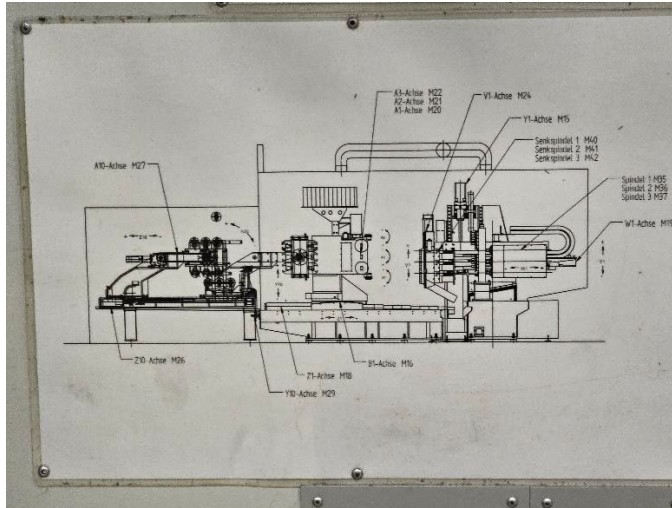
Layout of the Flexible Crankshaft Line, also showing Storage Areas for intermediate Buffering



NILES N 30 x 1.500 crankshaft turning and turn broaching machines



TBT deep drilling (oil bore)



NILES N 30 MCM x 2.500 crankshaft turning, milling, turn-broaching and drilling machines

GLEASON – PFAUTER GP 130 S gear shaper (rec 2019)





The NILES-SIMMONS N 30 MCM – 2.500 Multi-Slide Machining Centres are designed for complete machining of crankshafts. Applications range from prototyping of small passenger vehicle crankshafts over the complete machining of crankshafts for light aircraft to one-offs and small-batch manufacture of large crankshafts for stationary or marine diesel engines. The combination of the universal turning, drilling and milling head with powerful external milling units combines flexibility of turning, drilling and milling operations configured for crankshaft machining with high stock removal capabilities for machining crankshaft bearings and counterweights by using large side milling cutters. Gun drilling, gear hobbing or hard turning and hard mill/turning processes complete the variety of applications up to semi-finishing of hardened crankshafts.

Added value:

- Efficient complete machining of crankshafts of up to 2.500 mm in length
- Machining of bearings and cheeking of counterweights by means of side milling cutter with separate and powerful external milling unit
- Use for prototyping, one-offs and small-batch machining
- Gun drilling, gear hobbing, hard turning and hard mill-turning

REIS deburring cells with KUKA robot handling (2 of)



SMS ELOTHERM induction heat treatment with NOLZEN stress releasing furnace and WELLER intermediate washing



HEGENSCHEIDT 7794 bearing fine turning+finishing HEGENSCHEIDT 7893R deep rolling+straightening HOFFMANN pre-balancing (manual)



JUNKER JUNCRAK 6000/50-50 (2 of) and JUMAT 5000/60 crankshaft grinding machines



NILES N 30 end turning



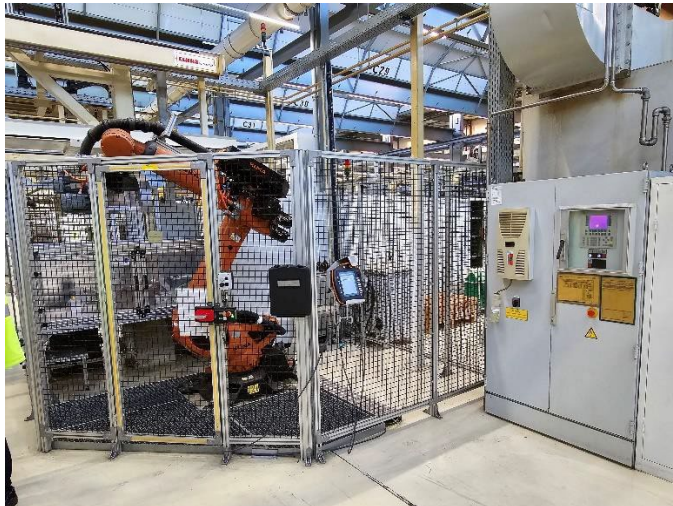
HOFMANN intermediate balancing (inline)



PAUL KOESTER assembly of encoder



ONLINE crankshaft brushing + KUKA handling



SUPFINA 720/1 crankshaft superfinishing

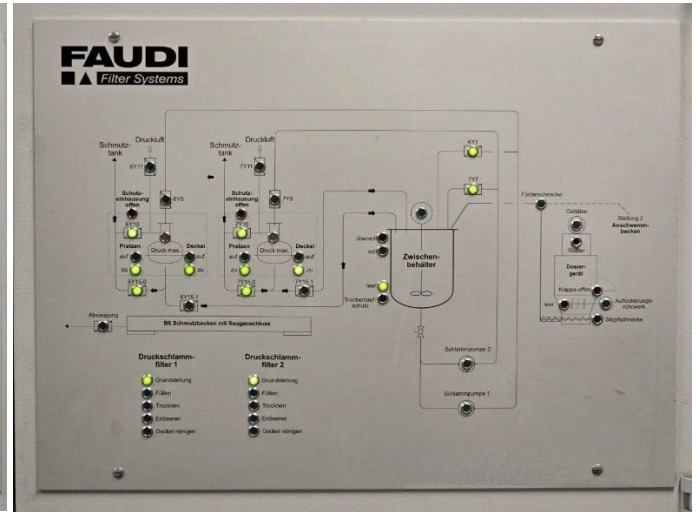
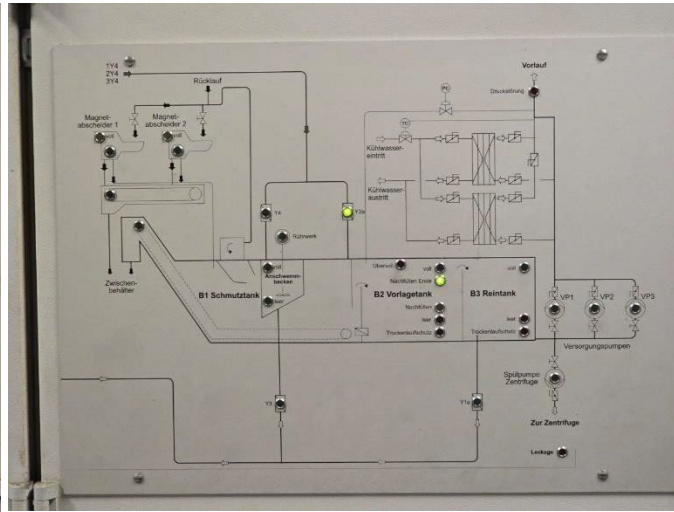
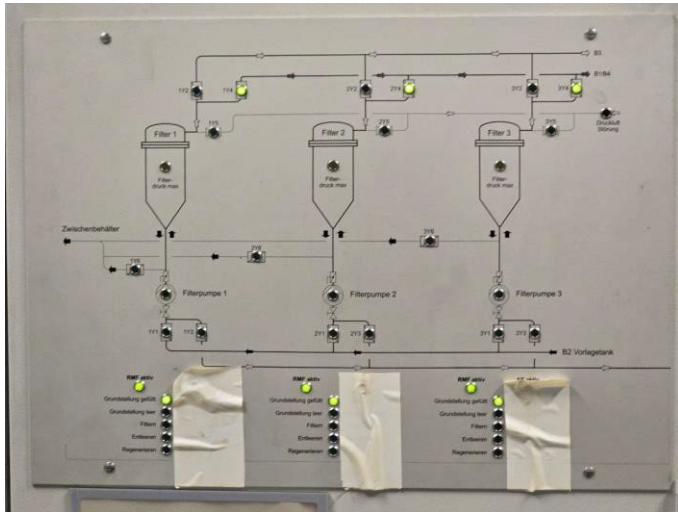


HOMMEL final check + classification (KUKA handling)



FAUDI Coolant Unit and Equipment of Crankshaft Line





Mücke

FAUDI
coolant

Anlage : RSF 3-fach
 Leistung : 80 kW
 max. Versicherung : 200 A
 Spannung : 400V / 50Hz
 3/PEN

Baujahr : 2005
 Werk-Nr. : 1999243
 Auftrag : KA1-1528
 Inv.-Nr. : 9 702 818

