



## **ALLEN CODING MACHINES LIMITED**

Designers and Manufacturers of Hot Foil overprinting equipment  
used throughout the world by the packaging industry.

### ***Sales and Service***

6 Little Mundells,  
Welwyn Garden City,  
Herts, AL7 1LD  
England.

Telephone: 0707 371117  
Telex: 266773  
Fax: 0707 320225

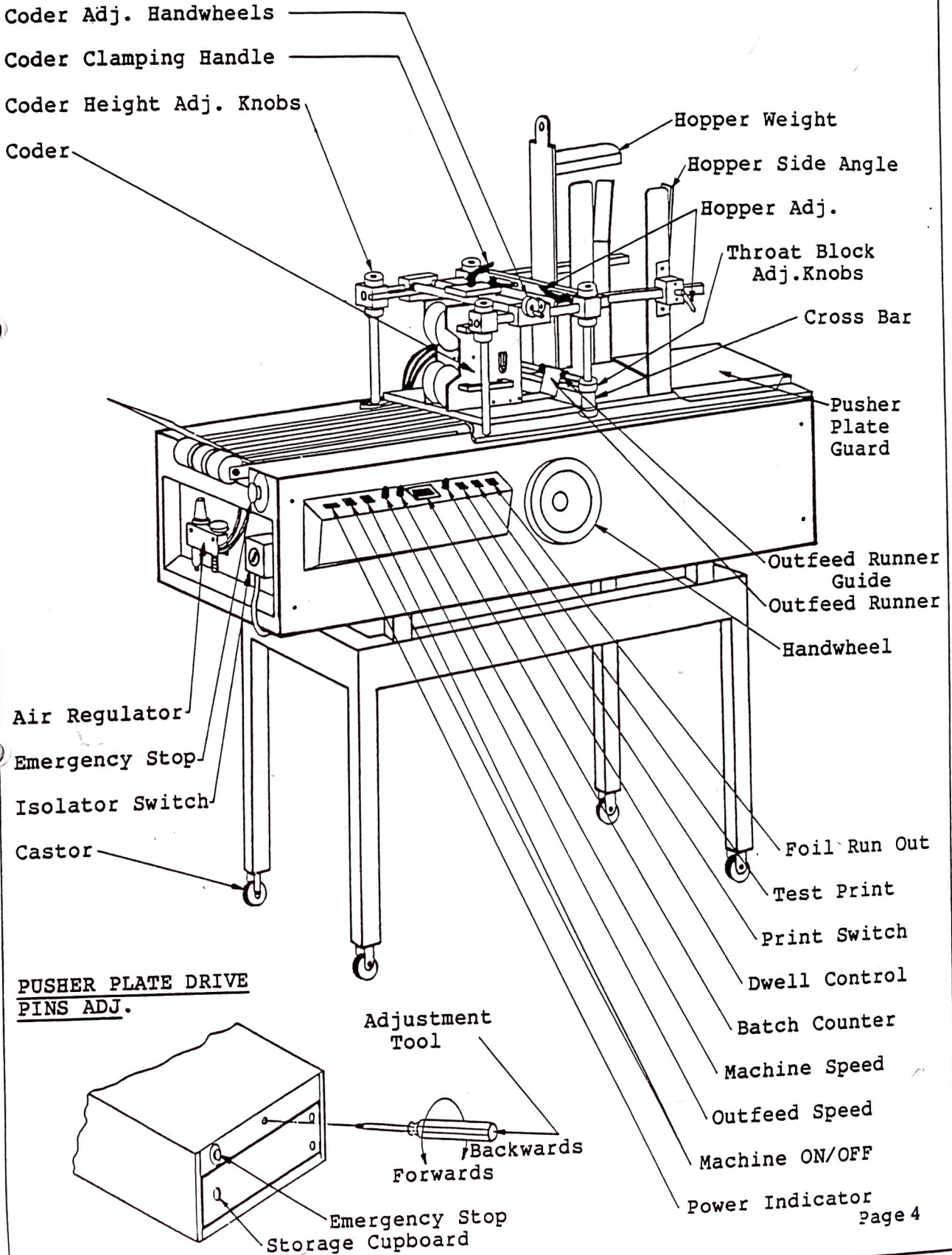
CONTENTS

<u>PARA.</u>		<u>PAGE</u>
<u>Installation</u>		
1.	Siting the Machine	2
2.	Electrical Supply	2
3.	Pneumatic Connections	2
<u>Safety</u>		
1.	General	2
<u>Operating Instructions</u>		
1.	Description of Operation	3
2.	General Machine Layout	4
3.	Setting the Machine	5
4.	Printing	7
5.	Batch Counters	8
6.	Changeover	9
<u>Maintenance</u>		
1.	Routine	10
2.	Coder	10
3.	Major	10
4.	Electrical	11
5.	Conveyor/Feeding Head Removal	12
6.	P.C.B. Layout	13
7.	Wiring Diagram	14
<u>Spare Parts</u>		
1.	List of Spares	15
2.	Lubricants	19

**DESCRIPTION OF OPERATION**

Cartons are taken singly from the hopper by a pusher plate which moves the carton under the throat block and outfeed runner to the edge of the tufnol top plate. A proximity cycle switch is activated by the carton feed mechanism which signals the timer circuit to energise the solenoid valve. The print head makes its print stroke during the dwell time at the end of which the solenoid valve is de-energised and the print head makes its return stroke. The carton feed mechanism returns the pusher plate to the rear of the hopper during the print cycle: the next carton is then moved to the edge of the tufnol top plate thereby ejecting the already printed carton on to the outfeed conveyor.

### GENERAL MACHINE LAYOUT



## INSTRUCTIONS FOR AUTOMATIC CARTON CODER MODEL 4ACC

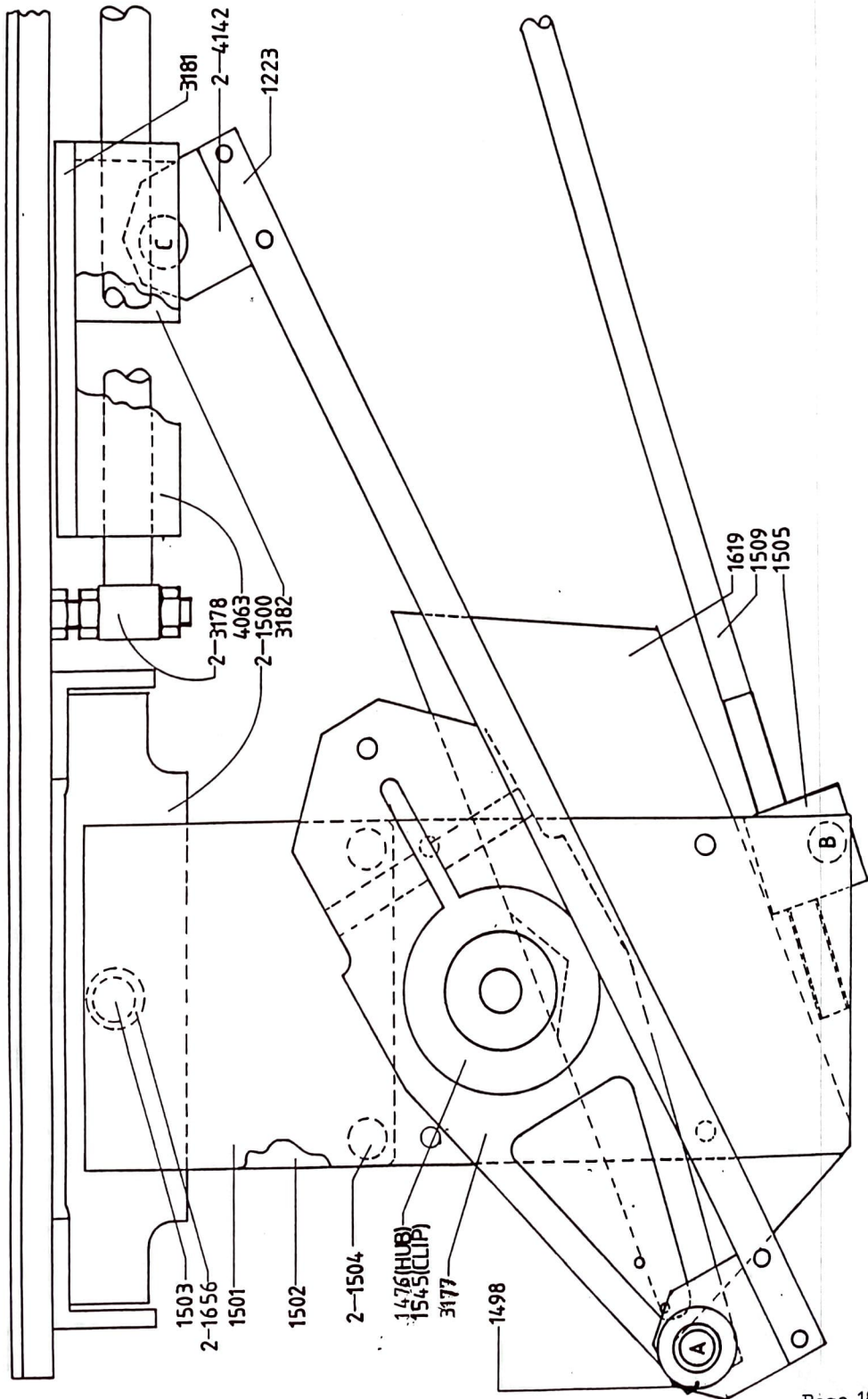
<u>Description</u>	<u>Part No.</u> <u>For</u> <u>Std M/C</u>	<u>For</u> <u>Tropicalised</u> <u>M/C</u>
<u>Outfeed Conveyor</u>		
Outfeed conveyor transport belt	1235	1235
Conveyor motor drive belt	1520	1520
Conveyor motor	1544	1544
Conveyor motor brushes (1 pair)	1668	1668
<u>Control Panel</u>		
Neon power indicator	1564	1564
Machine ON Switch (green)	4143	5861
Machine OFF or F.R.O. Reset Switch (red)	4144	5863
Print Switch (amber)	4145	5862
Test Switch (blue)	4146	5864
Switch Bulb 28V	2478	2478
Control Knob Kit	3732	3732
Potentiometer Timer	1712	1712
Potentiometer Speed control	1711	1711
Batch Counter Module LED display	1657	1657
Batch Counter Module LED display preset (if fitted)	1677	1677
<u>Electronics</u>		
Transformer Toroidal	2315	5854
Solid State Control P.C.B.	1548	1548
Speed controller P.C.B.	1412	1412
Timer P.C.B.	2299	2299
Fuse Set	1884	1884
Transformer	1738	1738
<u>Miscellaneous</u>		
Polishing Fluid	1207	1207
Air Service Unit	2440	2440
Air Pressure Gauge	1803	1803
Isolator Switch	1523	1523
Emergency Stop Switch	1791	1791
Emergency Stop Button	1790	1790
Foot Switch c/w lead (allows machine to be used semi automatically for printing difficult to feed and/or small quantity of cartons)	1627	1627
Cooling Fan	1582	1582
Castor, Fixed	1857	1857
Castor, Swivelling Braked	1856	1856
Storage Cupboard Door	1536	1536
Adjustment Tool	1678	1678
Machine Cover	1590	1590
Recommended Spares Kit 4ACC 40	3797	3797
Recommended Spares Kit 4ACC 60	4152	4152

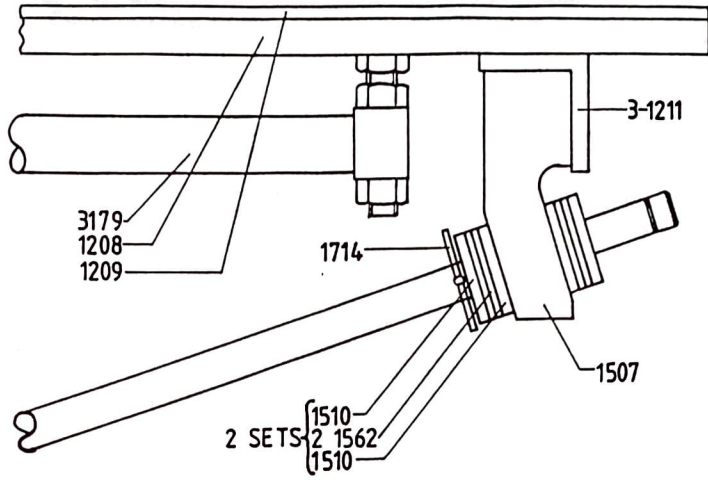
**NOTE:**

Please state serial number of machine when ordering spare parts.

## INSTRUCTIONS FOR AUTOMATIC CARTON CODER MODEL 4ACC

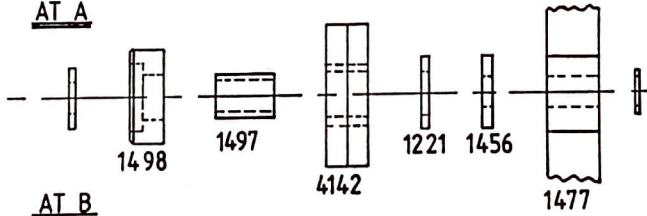
### CARTON FEEDING HEAD INSIDE



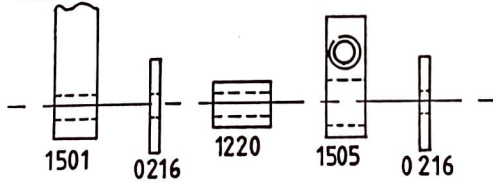


## BEARING CONFIGURATION

### AT A



### AT B



### AT C

