

By Order of ESW ROEHRENWERKE GmbH we offer for immediate Sale
the following Manufacturing Equipment for seamless Pipes, ex location Eschweiler/Germany:

Rotary Hearth Furnace



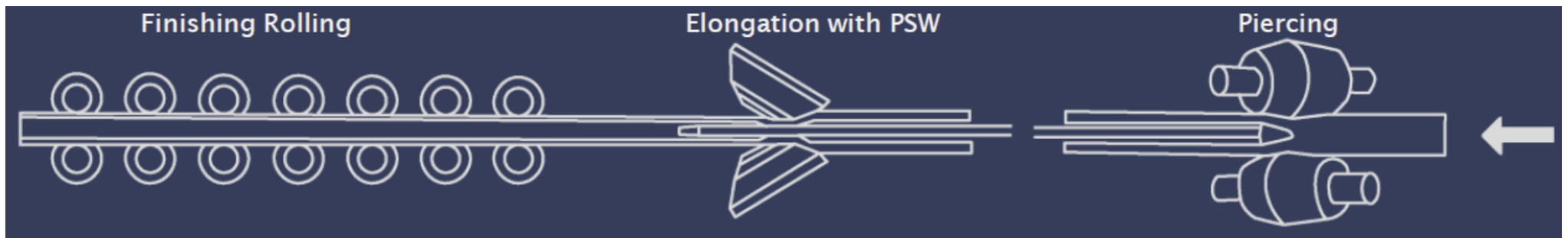
Piercing Mill



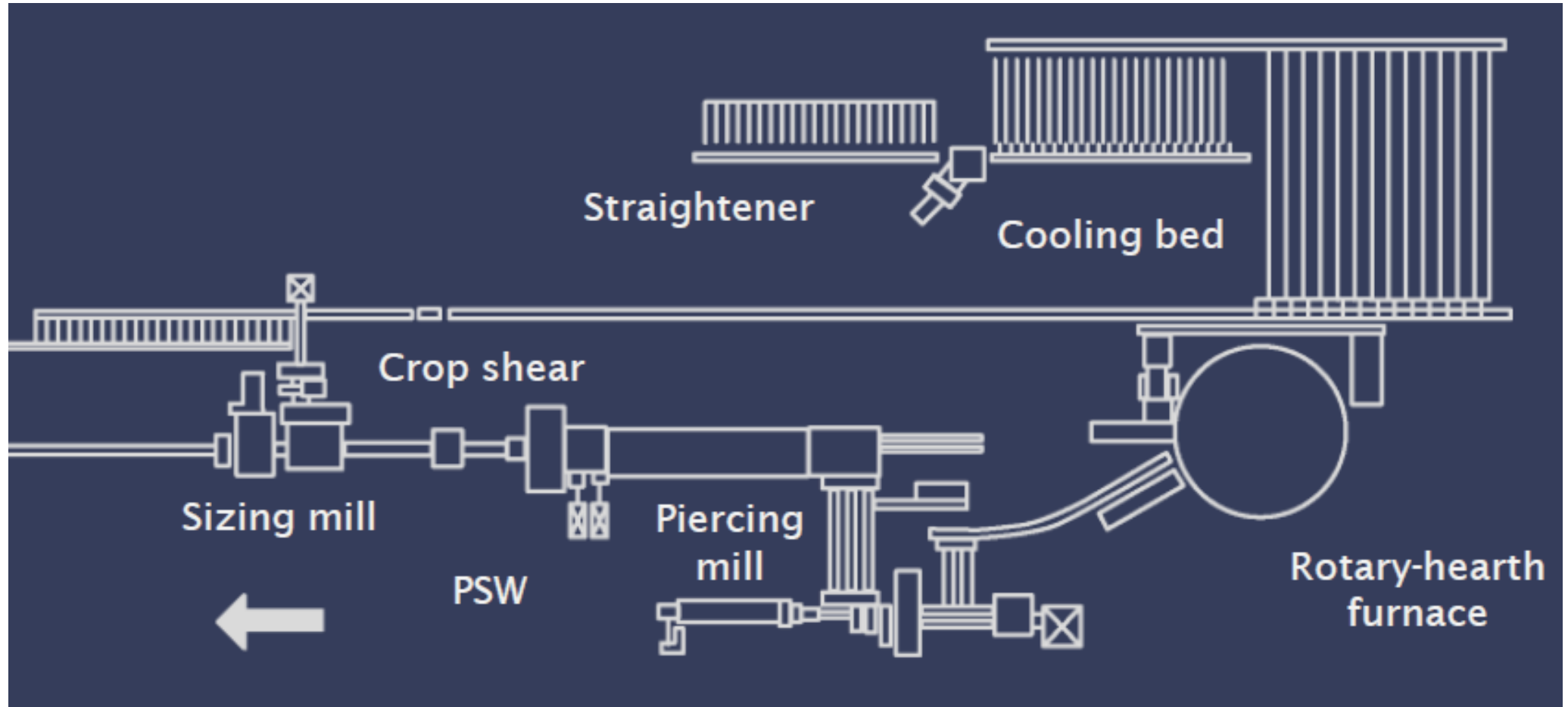
Planetary Rolling Mill (PSW)



Production Process:

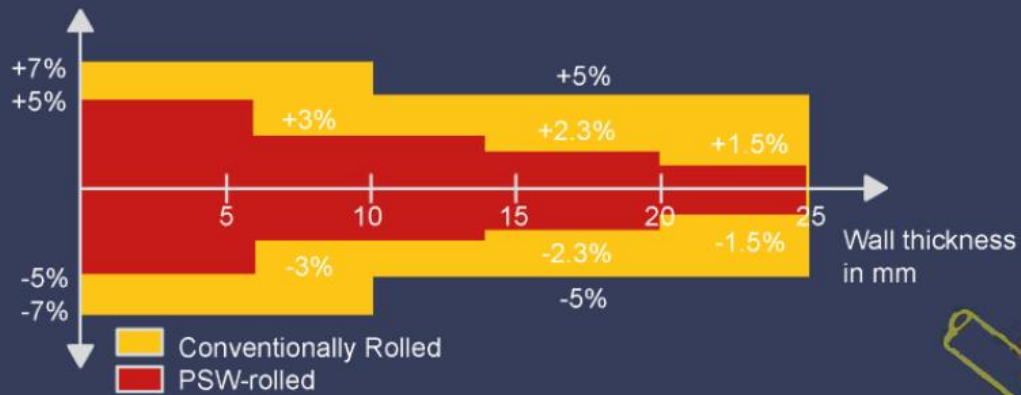


Production Equipment:

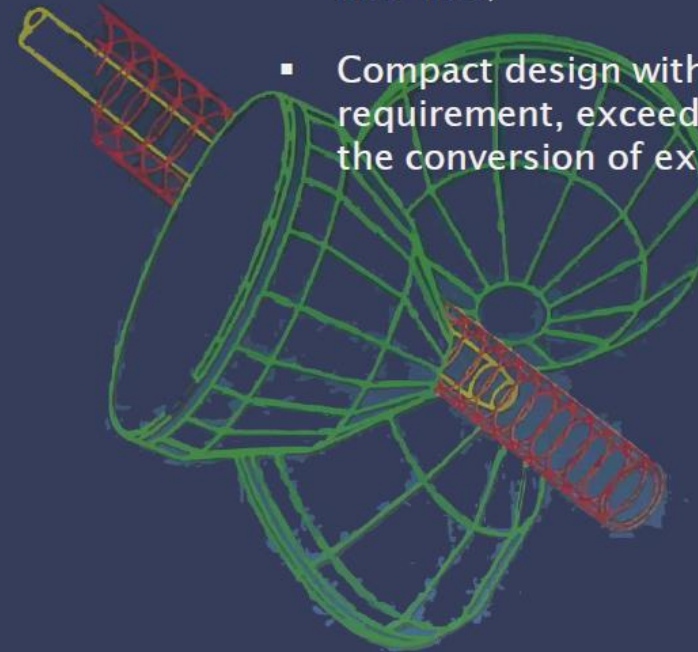


Main Data:

Bloom dia x max length:	270 & 310 x 3.700 mm
Pipe Range:	dia. 70 – 244,5 mm
Wall Thickness:	7,1 – 60 mm
Pipe Length:	13 meter
Capacity per Year:	80.000 to



- Highly economical, even with small batches. Rolling in one heat;
- Wall thickness tolerances far below current tube standards;
- No rotation of the emerging tube blank, therefore finish-rolling or coiling in the flow line;
- Compact design with low space requirement, exceedingly well suited for the conversion of existing plants.



PSW
TECHNOLOGY AND KEY FEATURES





- Max. productivity 20 t/h
- Max. Bloom weight 1.180 kg
- Max. Bloom diameter 320 mm

ROTARY HEARTH FURNACE



- Standard bloom sizes:
270 - 310 mm
- Hollow length:
max. 3.700 mm

PIERCING MILL



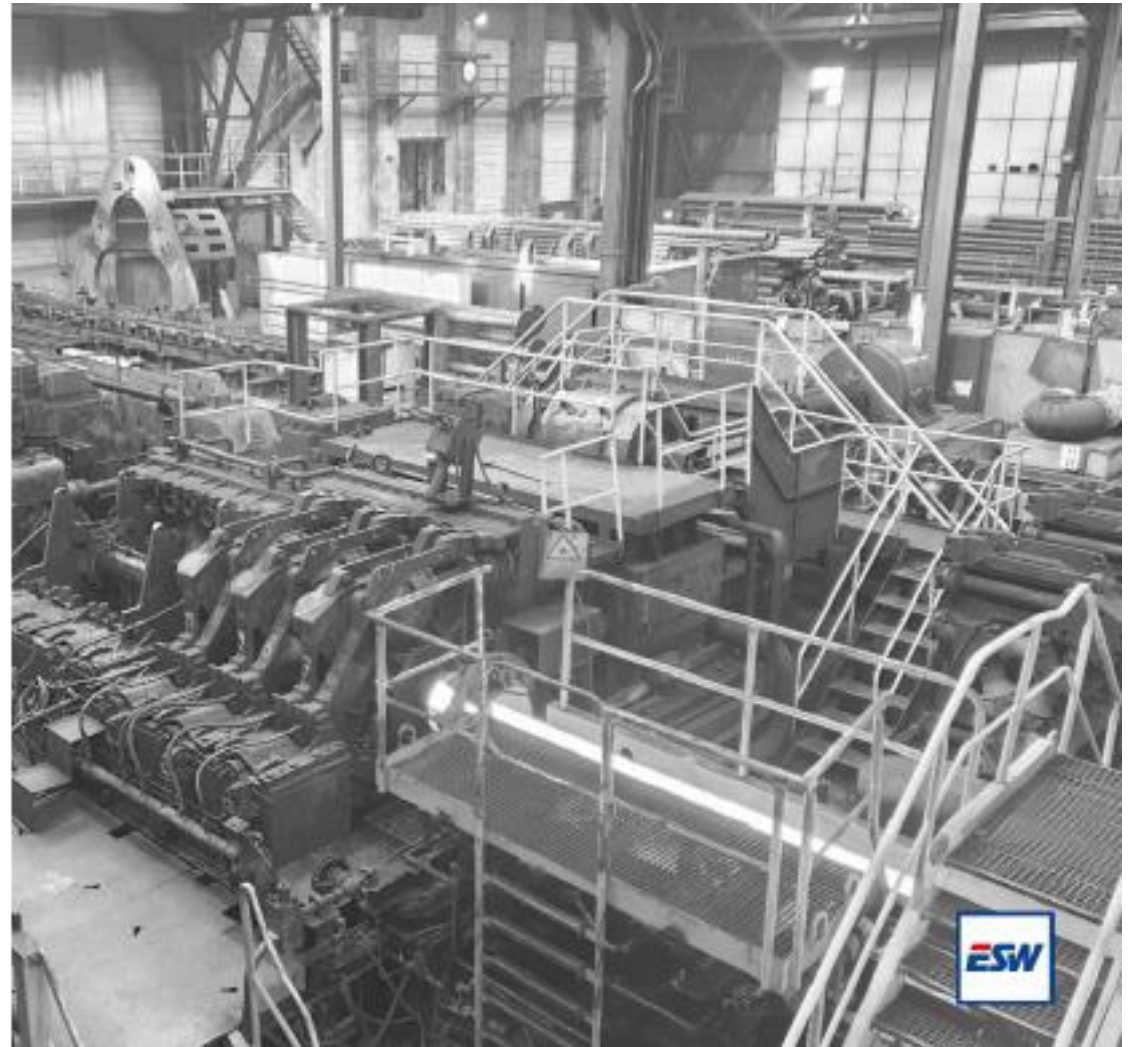
- 3-roll planetary mill
- Min. hollow 80 mm diam.
- Max. hollow 260 mm diam.
- Min. Rolling temperature 950°C
- Max. hot finished length 40 m

PSW ROLLING MILL



- Total number of stands 17
- 3 stands arranged in groups of 2 rolls
- &
- 14 stands arranged in groups of 3 rolls

SIZING MILL



- In-line furnace
- Capacity up to 40 t / h
- Normalization
(55 % of total production)
- Annealing
- Possibility to combine with
station for quenching

NEW IN-LINE FURNACE FOR NORMALIZATION



- Cooling bed width of 20 m
- Straightening of tubes with OD: 70 mm - 250 mm
- Max. Tensile strength of 800 N/mm²
- Tube straightness of up to 1/1000 mm
- Cutting head & tale

COLD AREA



- Capacity up to 2000 t / month
- Normalization
- Annealing
- Possibility to combine for QT treatment

OUT-LINE FURNACE



The following Pipe Types, Sizes and Materials (Carbon & Alloy Grades up to 9% Chrome) can be produced:

BOILER TUBES / KESSELROHRE			
DIN EN 10216-2	NFA 49-213	ASTM/ASME A/SA	BS3602 Part 2
P235 GH TC1	TU 42 C-L1	Grade B	HFS 500 Nb
P265 GH TC1	TU 48 C-L1	Grade C	
P235GH TC2	TU 42 C-L2	P1	
P265GH TC2	TU 48 C-L2	P5	
20 MnNb 6		P11	
16Mo3		P12	
13 CrMo 4-5		P22	
10CrMo9-10		P9	
X10 CrMoVNb 9-1		P91	
X11 CrMo9-1+I		P92	
X11 CrMo9-1+NT			
X11 CrMo 5+I			
X11 CrMo 5+NT1			
15NiCuMoNB5-6-4			

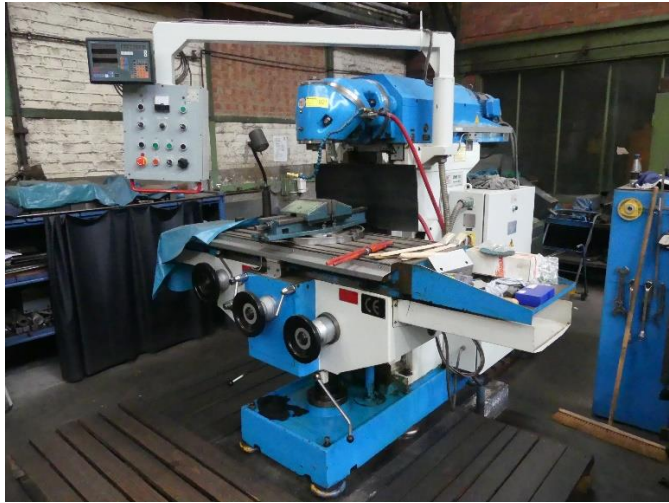
MECHANICAL TUBES / HANDELSROHRE		
DIN 1629	DIN EN 10297-1	DIN EN 10210-1/-2
St 37.0	E 235 + AR	S235JRH
St 44.0	E 355 + AR	S235JOH
St 52.0	E 355 + N	S355JOH
	E 355 J 2	S355J2H
	E 355 K2 + N	S355NH

HOLLOW BARS / DREHTEILROHRE		
ESW MR 04.03	DIN EN 10294-1	DIN EN 10297-1
20 MnV 6	E355+AR	
20 MnV 6 N	E355+N	
20 MnV 6 V	E 470	
20 MnV 6 QT	E 470 + AR	
20 MnVS 6	E 470 + N	
20 MnVS 6 V	E 420 J2+N	
20 MnVS 6 Mod-02-U	E 460 K2 + N	
20 MnVS 6 Mod-02-N	E 590 K2 + QT	
20 MnVS 6 Mod-02-V		

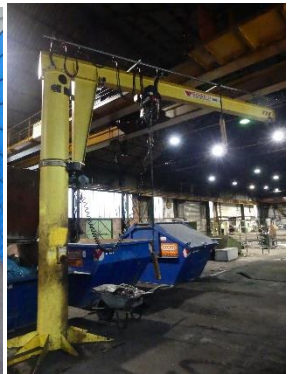
API TUBES / API ROHRE	
API 5L / ASTM	API 5 CT
Grade 1026 - HF	Grade L 80 Type 1
Grade 1026 - B/C	Grade N 80 Type 1
Grade BN - X42 N	Grade P110
Grade X52 - PSL1	
Grade X52N - PSL2	
Grade X60 - PSL1 / PSL 2	
Grade X65 - PSL1 / PSL 2	
Grade X65 - PSL1 / PSL 2	
Grade X70 - PSL1 / PSL 2	

QUALITY TUBES / GÜTEROHRE					
DIN EN 17204 / ASTM-A 519	DIN EN 10210-1/-2	ASTM-A 333	DIN EN 10216-3	SEW 090-2	ISO 3183
42CrMo 4 U	S 460 NH	Grade 6	P 275 NL 1 TC1	S 770 QL / S 770 QL1	L290NE
42 CrMo 4 A / Grade 4140 A			P 275 NL 1 TC2	S 690 G5QL	L360NE
42 CrMo 4 N			P 355 NL 1 TC1	S 690 QL1	L415QB
42 CrMo 4 V / Grade 4140 QT			P 355 NL 1 TC2		L450QB
30 CrMo 4 / Grade 4130 HF			P 275 NL 2 TC1		
30 CrMo 4 V / Grade 4130 QT			P 275 NL 2 TC2		
20 MnCr 5			P 355 NL 2 TC1		
C45			P 355 NL 2 TC2		
C45N			P 355 NH TC1		
C45G			P 355 NH TC2		
C45V			P 460 NL1 TC2		

Machine Tools, Workshop and Testing Equipment is for Sale by Online-Auction separately:







- Cutting to Short Lengths
(acc.to customer requirments)
- Deburring/grinding
- Sandblasting
- Chamfering
- Revision & Inspection
- Preservation & Marking
- Weighing and measuring

FINISHING AREA



- 3 Machines
- Tubes are tested for longitudinal / transversal / oblique imperfections
- Wall thickness measure



ULTRASONIC TESTING

For details please check our website [auctions.maynards.com](https://www.auctions.maynards.com) or contact us under andreas@maynards.com

All Prices and Offers +18% Buyers Premium. Prior Sale of all Assets reserved! Our actual T&Cs are valid.

All Assets become sold ex Location/Foundation Eschweiler / Germany