
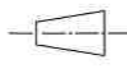

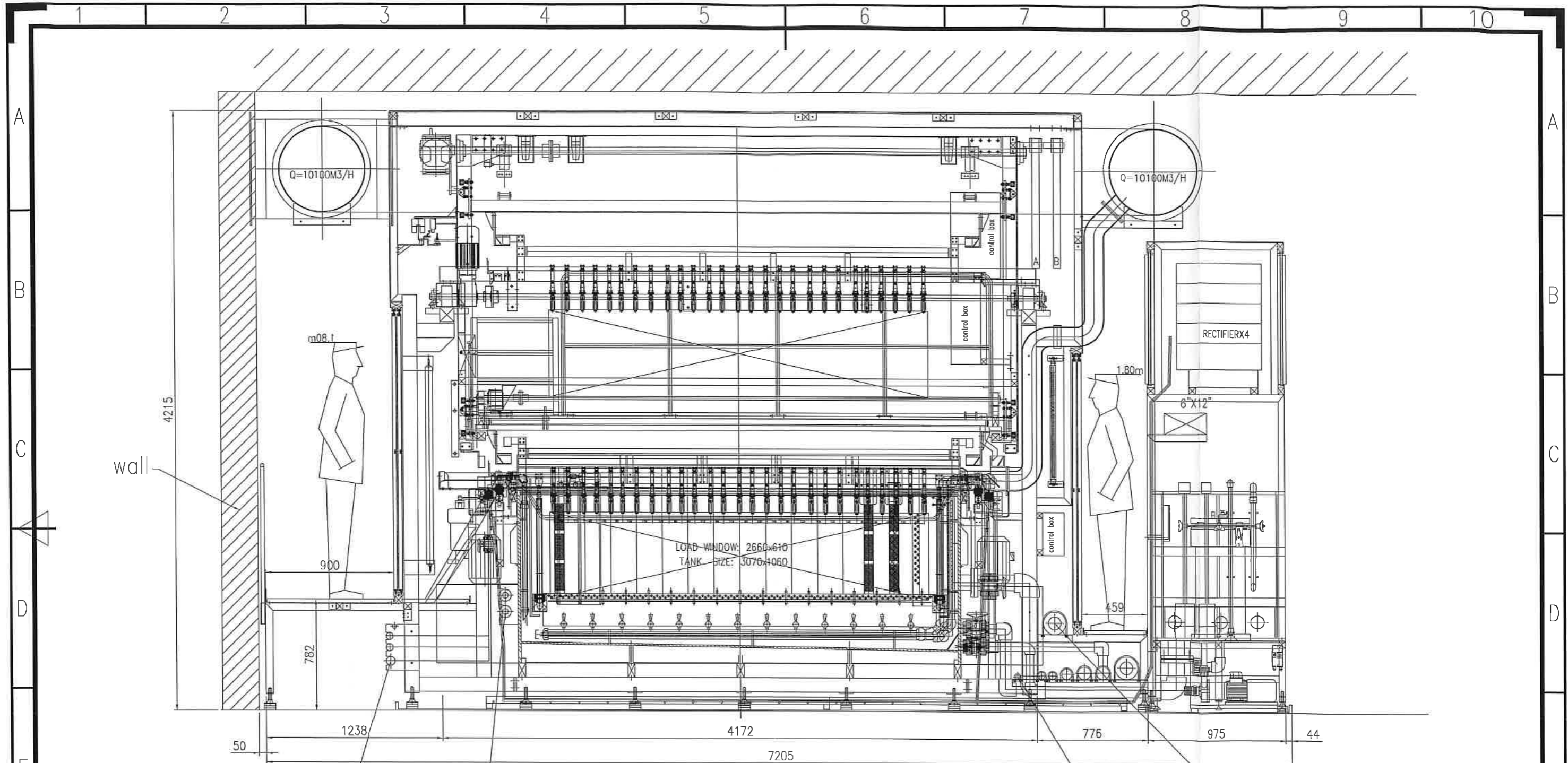


STG.	PROCESS	STG.	PROCESS	STG.	PROCESS
1	SPRING TYPE SEMI AUTO LOAD/UNLOAD	18	TIN PREDIP	30-31	COPPER PLATE
2-6	BUFFER	19	ACID CLEAN	32-33	COPPER PLATE
7	RINSE+TOP SPRAY	20	RINSE+TOP SPRAY	34-35	COPPER PLATE
8	RINSE+TOP SPRAY	21	RINSE+TOP SPRAY	36-37	COPPER PLATE(EMPTY TANK)
9	RACK STRIP	22	MICROETCH	38-39	COPPER PLATE(EMPTY TANK)
10	DRY (RACK)	23	RINSE+TOP SPRAY	40-41	COPPER PLATE(PULSE/EMPTY TANK)
11-12	DRY (PANNEL)	24	RINSE+TOP SPRAY	42-43	COPPER PLATE(VIA FILL / EMPTY TANK)
13	RINSE+TOP SPRAY	25	RINSE+TOP SPRAY	44	ANODE HOLDING TANK
14	RINSE+TOP SPRAY	26	RINSE+TOP SPRAY	45	ANODE MAINTENANCE
15-16	TIN PLATE	28-29	COPPER PREDIP		
17	TIN PLATE(EMPTY TANK)				

Y11046		GGP/GERMANY		3
		PATTERN PLATE LINE - LAYOUT		2
DESIGN: L F 10-30-11	CH'D.: GNL 10-30-11	APP.: SRQ 10-30-11	QTY.:	1
DWN.: GNL 10-28-11	SCALE: X:X	DWG.No.: Y11046-D-01-32-000-01	REV BY	DATE

COPYRIGHT: THIS DRAWING IS TO BE TREATED AS STRICTLY CONFIDENTIAL AND SHALL REMAIN THE SOLE AND EXCLUSIVE PROPERTY OF PAL AND SHALL NOT BE DISCLOSED TO ANY PERSON OR ORGANIZATION WITHOUT THE PRIOR EXPRESS WRITTEN CONSENT OF PAL IN ANY CIRCUMSTANCES.




 亞洲電鍍器材有限公司
 Process Automation Int'l Ltd.



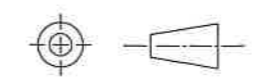
- DN20 SS PIPE (COM.AIR)
- DN40 PP PIPE (DI)
- DN40 PP PIPE (MW)
- DN50 PP PIPE (AIR)

- DN32 PP PIPE (COOL-IN)
- DN32 PP PIPE (COOL-OUT)

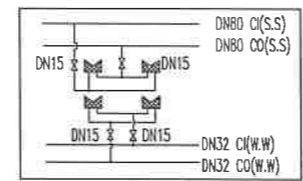
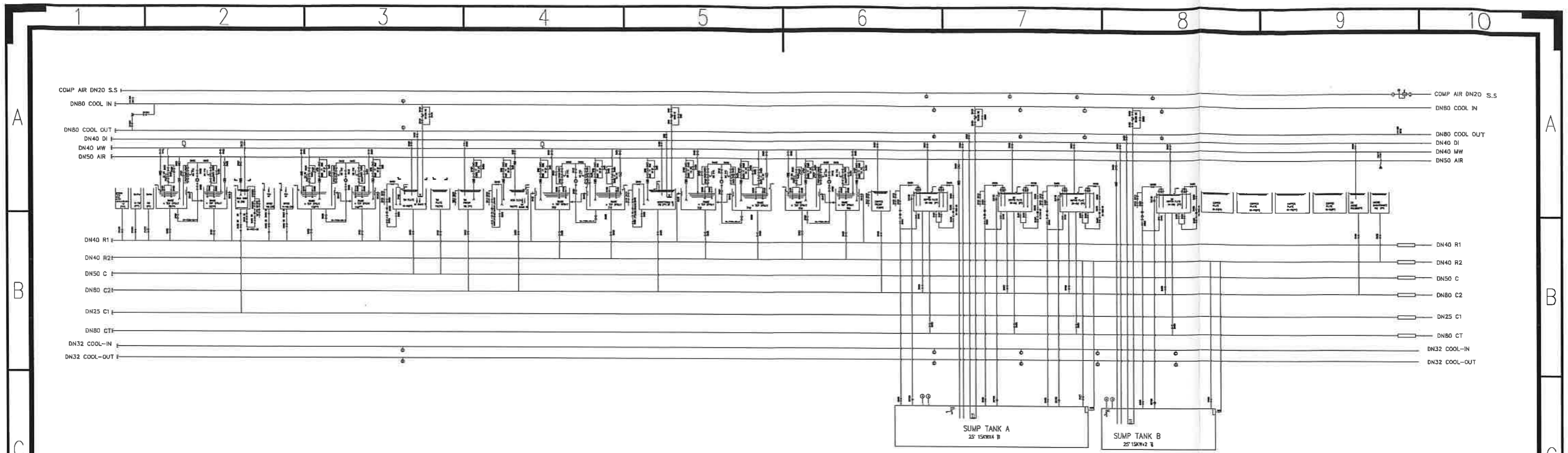
- DN25 PP PIPE (C1)
- DN40 PP PIPE (R1)
- DN40 PP PIPE (R2)
- DN65 PP PIPE (C)
- DN80 PP PIPE (C2)
- DN80 PP PIPE (CT)
- DN80 PP PIPE (COOLIN OUT)

Y11046	GGP/GERMANY			3
	PATTERN PLATE LINE - CROSS SECTION			2
DESIGN: L F 10-30-11	CH'D.: GNL 10-30-11	APP.: SRQ 10-30-11	QTY.:	1
DWN.: GNL 10-28-11	SCALE: X:X	DWG.No.: Y11046-D-01-32-001-01	REV	BY DATE

COPYRIGHT: THIS DRAWING IS TO BE TREATED AS STRICTLY CONFIDENTIAL AND SHALL REMAIN THE SOLE AND EXCLUSIVE PROPERTY OF PAL AND SHALL NOT BE DISCLOSED TO ANY PERSON OR ORGANIZATION WITHOUT THE PRIOR EXPRESS WRITTEN CONSENT OF PAL IN ANY CIRCUMSTANCES.

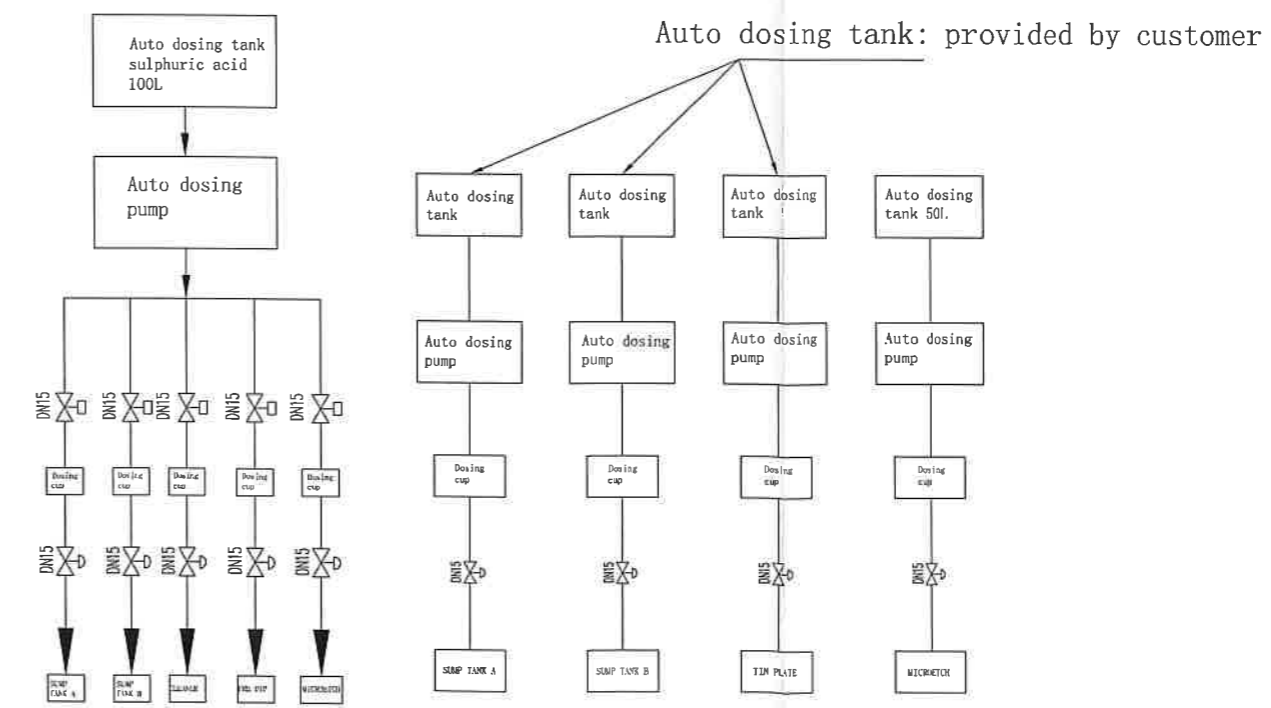


亞洲電鍍器材有限公司
Process Automation Int'l Ltd.



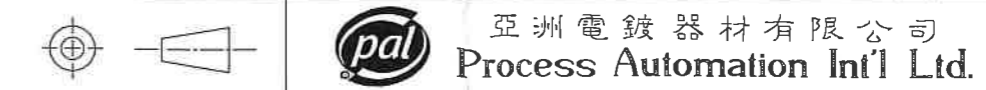
NOTE: ALL PIPES & FITTINGS USE +GF+ PP UNLESS SPECIFIED

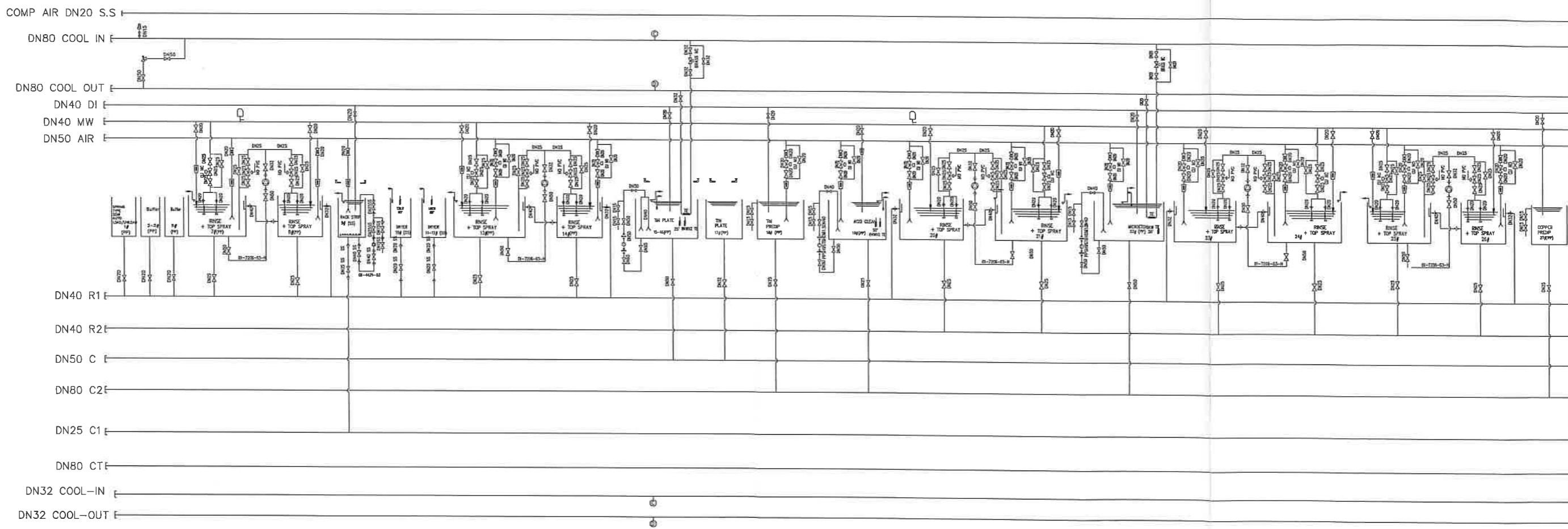
- REMARK:
- ⊗ BALL VALVE
 - ⊔ PIPE CAP
 - ⊙ AUTODOSING UNIT
 - Y Y-STRAINER
 - 300MM TRANSPARENT PIPE
 - ⊗ SOLENOID VALVE
 - mw HEATER
 - ⊙ SPRAY
 - ⊙ FILTER CHAMBER
 - ⊗ PRESSURE RELIEF VALVE
 - ⊗ DIAPHRAGM VALVE
 - + UNION
 - ⊗ LIP EXTRACTION
 - ⊗ REDUCER
 - ⊗ LIP EXTRACTION
 - ⊙ SIGNAL OUTPUT
 - + TEMP SENSOR
 - ⊗ LEVEL SENSOR
 - ⊗ FILTER
 - ⊗ SPRAY HEAD
 - ⊙ CIRCULATION PUMP
 - + FLANGE
 - ⊗ FILTER REGULATOR UNIT
 - ⊙ FITTING FOR VIBRATOR
 - ⊗ COOLING COIL
 - ⊙ PRESSURE GAUGE
 - ⊗ PIPE CAP
 - ⊙ SHOCKING
 - ⊗ DIAPHRAGM PNEUMATIC VALVE




Y11046	GGP/GERMANY		H	1	PIN HE	11-23-2011
MAIN PIPE WORK			0	PIN HE	11-17-2011	
DESIGN: PIN HE	CH'D.: X.F.ZHOU	APP.: Y.Q.XIAO	QTY.: 1 SET	REV	BY	DATE
DWN.: 11-17-2011	SCALE: N.T.S	DWG.No.: Y11046-H-00-32-500-00				

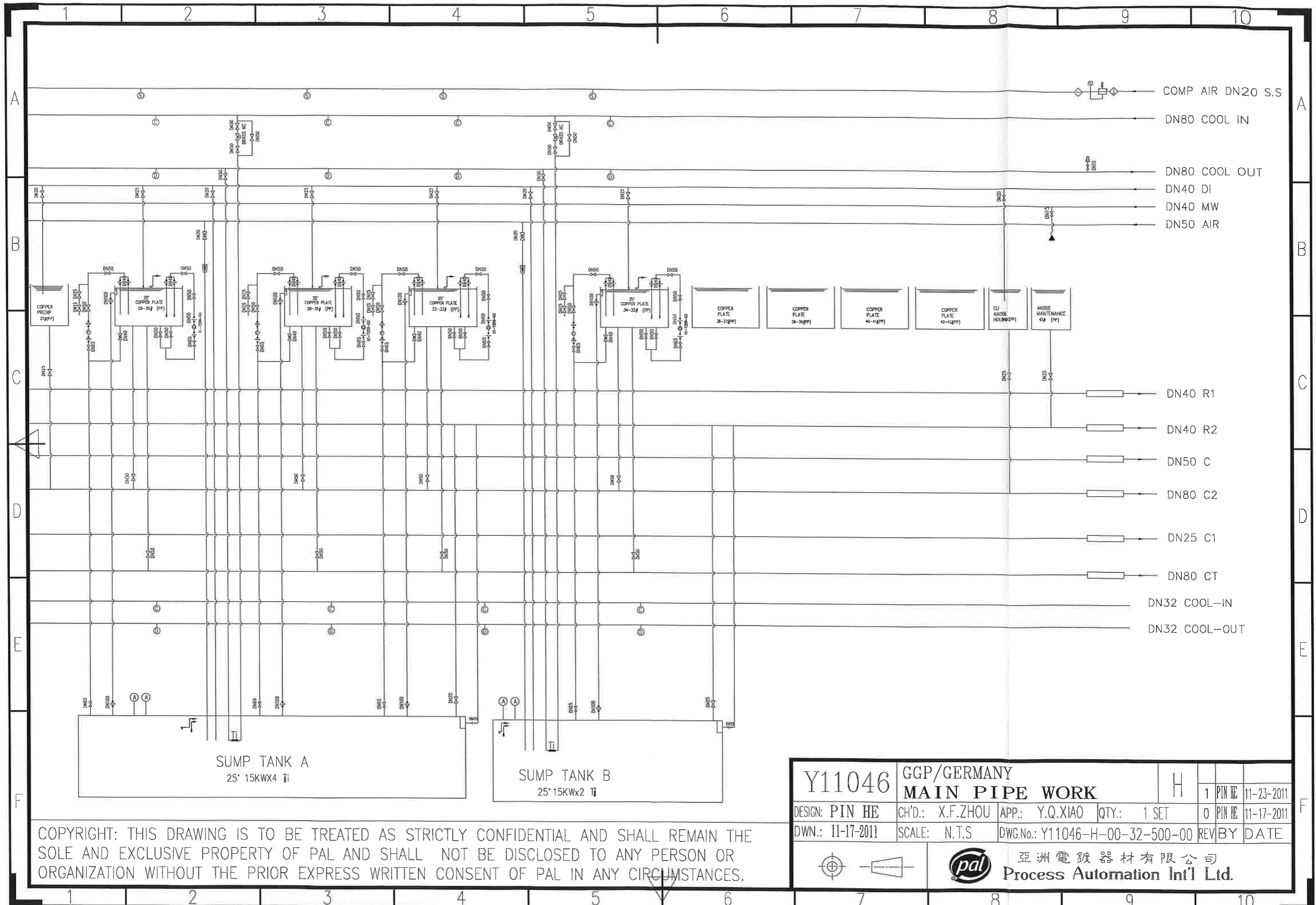
COPYRIGHT: THIS DRAWING IS TO BE TREATED AS STRICTLY CONFIDENTIAL AND SHALL REMAIN THE SOLE AND EXCLUSIVE PROPERTY OF PAL AND SHALL NOT BE DISCLOSED TO ANY PERSON OR ORGANIZATION WITHOUT THE PRIOR EXPRESS WRITTEN CONSENT OF PAL IN ANY CIRCUMSTANCES.





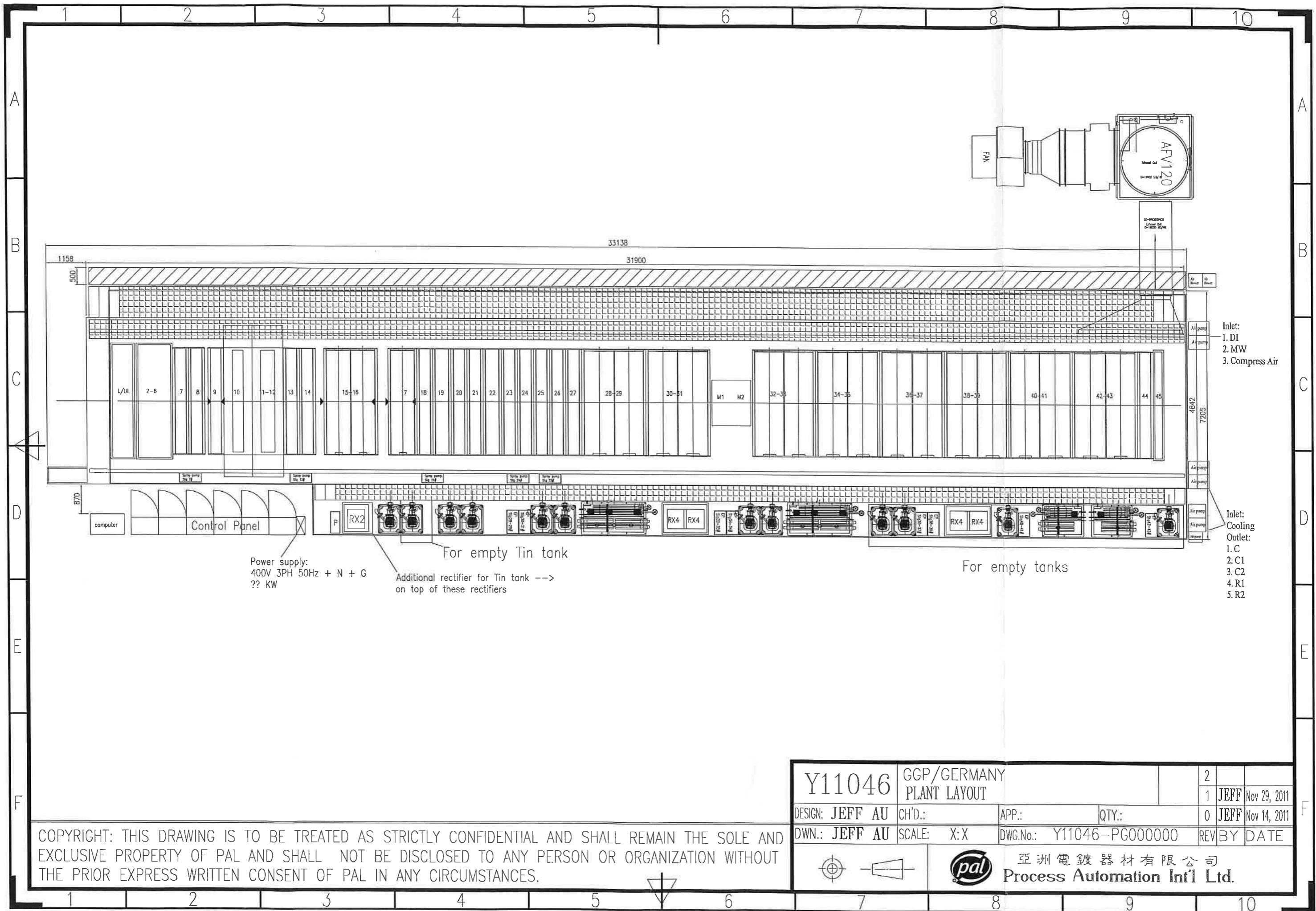
Y11046		GGP/GERMANY		H	
		MAIN PIPE WORK			
DESIGN: PIN HE	CH'D.: X.F.ZHOU	APP.: Y.Q.XIAO	QTY.: 1 SET	1	PIN HE 11-23-2011
DWN.: 11-17-2011	SCALE: N.T.S	DWG.No.: Y11046-H-00-32-500-00	REV BY DATE	0	PIN HE 11-17-2011
		 亞洲電鍍器材有限公司 Process Automation Int'l Ltd.			

COPYRIGHT: THIS DRAWING IS TO BE TREATED AS STRICTLY CONFIDENTIAL AND SHALL REMAIN THE SOLE AND EXCLUSIVE PROPERTY OF PAL AND SHALL NOT BE DISCLOSED TO ANY PERSON OR ORGANIZATION WITHOUT THE PRIOR EXPRESS WRITTEN CONSENT OF PAL IN ANY CIRCUMSTANCES.



COPYRIGHT: THIS DRAWING IS TO BE TREATED AS STRICTLY CONFIDENTIAL AND SHALL REMAIN THE SOLE AND EXCLUSIVE PROPERTY OF PAL AND SHALL NOT BE DISCLOSED TO ANY PERSON OR ORGANIZATION WITHOUT THE PRIOR EXPRESS WRITTEN CONSENT OF PAL IN ANY CIRCUMSTANCES.

Y11046		GGP/GERMANY		H	
		MAIN PIPE WORK			
DESIGN: PIN HE	CH'D.: X.F.ZHOU	APP.: Y.Q.XIAO	QTY.: 1 SET	1	PIN HE 11-23-2011
DWN.: 11-17-2011	SCALE: N.T.S	DWG.No.: Y11046-H-00-32-500-00	REV BY	0	PIN HE 11-17-2011
		DATE			
		亞洲電鍍器材有限公司 Process Automation Int'l Ltd.			



Y11046		GGP/GERMANY PLANT LAYOUT		2	
DESIGN: JEFF AU	CH'D.:	APP.:	QTY.:	1	JEFF Nov 29, 2011
DWN.: JEFF AU	SCALE: X:X	DWG.No.: Y11046-PG000000	REV	0	JEFF Nov 14, 2011
			BY	DATE	

COPYRIGHT: THIS DRAWING IS TO BE TREATED AS STRICTLY CONFIDENTIAL AND SHALL REMAIN THE SOLE AND EXCLUSIVE PROPERTY OF PAL AND SHALL NOT BE DISCLOSED TO ANY PERSON OR ORGANIZATION WITHOUT THE PRIOR EXPRESS WRITTEN CONSENT OF PAL IN ANY CIRCUMSTANCES.

