

ALFA LAVAL Decanter Centrifuge FOODEC 510, YoM 2007, Maschine-Number 5023786, Process-Liquid min. 0 Deg C (32 Deg F) – max. 100 Deg C (212 Deg F)

Max drum speed 3.650 rpm, Drum Length 2.035 mm, Drum Dia 480 mm, cone angle 10 Deg, Sediment Outlet, Type: 360 Deg,

Sediment Outlet:

- Radius: 131,7 mm
- Transport-Media: Ribs

Material:

- Endpieces + Drum Upper-Part: AL 111-2329-83 (Duplex Stainless Steel)
- Bolts: A4-80 (AISI 316)
- Conveyor-Screw: AL 11-2349 (AISI 316)

Liquid-Outlet:

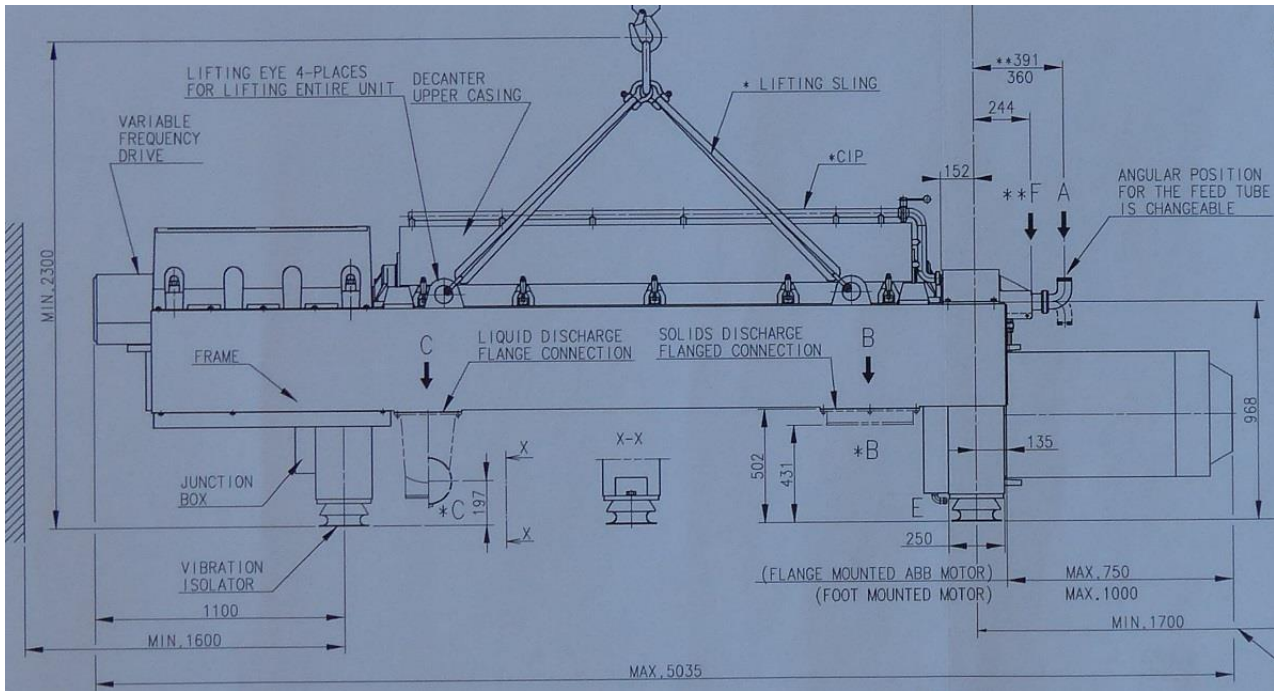
- Type: 8 adjustable level tubes
- Radius: 127 – 142 mm (installed in plant at 135 mm)

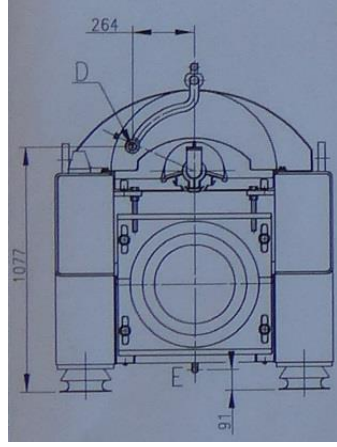
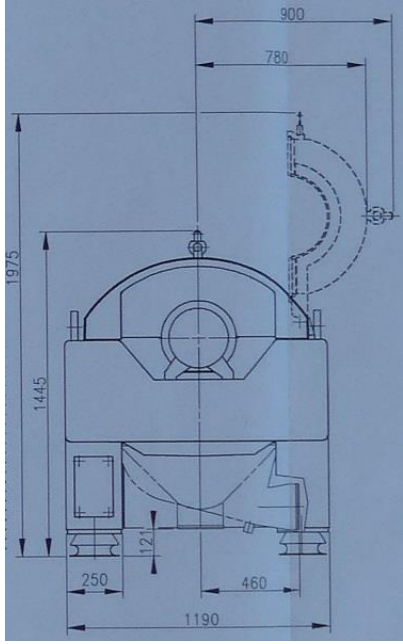
Drive:

- Voltage: 3 x 380 V / 50 Hz
- Gear Box:
 - o Planetary – 2 stage DD
 - o Max. Torque DD 8 kNm
 - o Ratio 1:100,8
- Sun-Wheel:
 - o variable frequency drive 7,5 kW IEC (400V / 50Hz), max. diff. Speed 9 rpm at 8 kNm, diff. Speed 14,9 rpm at max. 4,8 kNm (back drive motor, 400V / 50Hz)
 - o operation speed 3.650 rpm
 - o G-Force: 3.584 G
- Main Drive: 55 kW ABB 400VD

Weights:

- Empty decanter: 4.800 kg
- Rotating assy, incl. Pillow blocks 1.250 kg
- Complete frame assy, exkl. Main motor + rot. Assy 3.000 kg
- Main motor 600 kg
- Upper casing 130 kg
- Gear box 150 kg








ANLAGENBAU

FabrikationsNr.	07349-00	zul. Druck (PS)	0 bar	Innenbehälter	Kandys
Baujahr	2007	Prüfdruck (PT)	bar		
Werkstoff	1.4571	Inhalt (V)	2000 L		
Datum		zul. Temperatur (TS)	-10/90 °C		
	Nr. 26.11				

ANLAGENBAU AG - Unternehmen für die Lebensmittel- und Getränkeindustrie
Neufeldstrasse 9 - CH 3076 Worb

